

NOTES:

1. MATERIALS OF CONSTRUCTION:  
SHELL, FERRULE & BODY = BRASS, NICKEL PLATED  
CONTACT PIN = BRASS, SILVER PLATED  
INSULATOR = PHENOLIC, YELLOW PER PANTONE 110C

83-8SP-RFX

REVISIONS

DRAWING NO.

REV

DESCRIPTION

DATE

ECO

APPR

THIRD ANGLE PROJ.

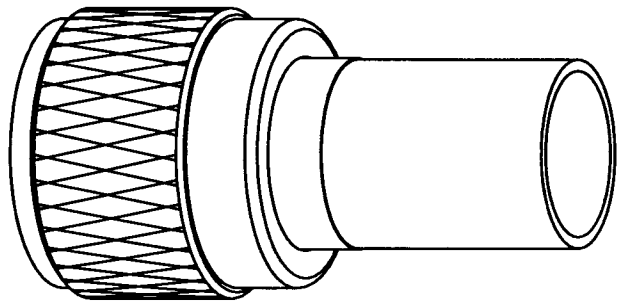
A

RELEASE TO MFG.

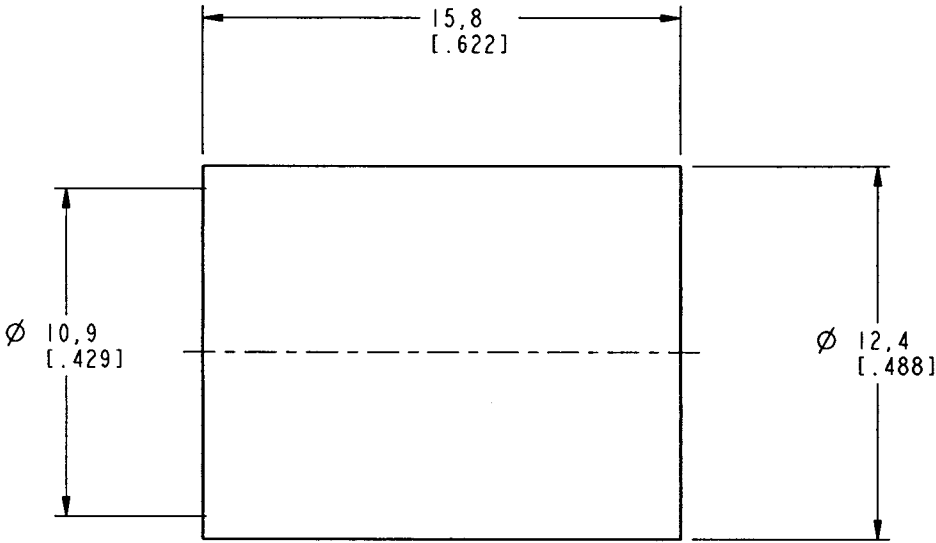
8/25/00

43482

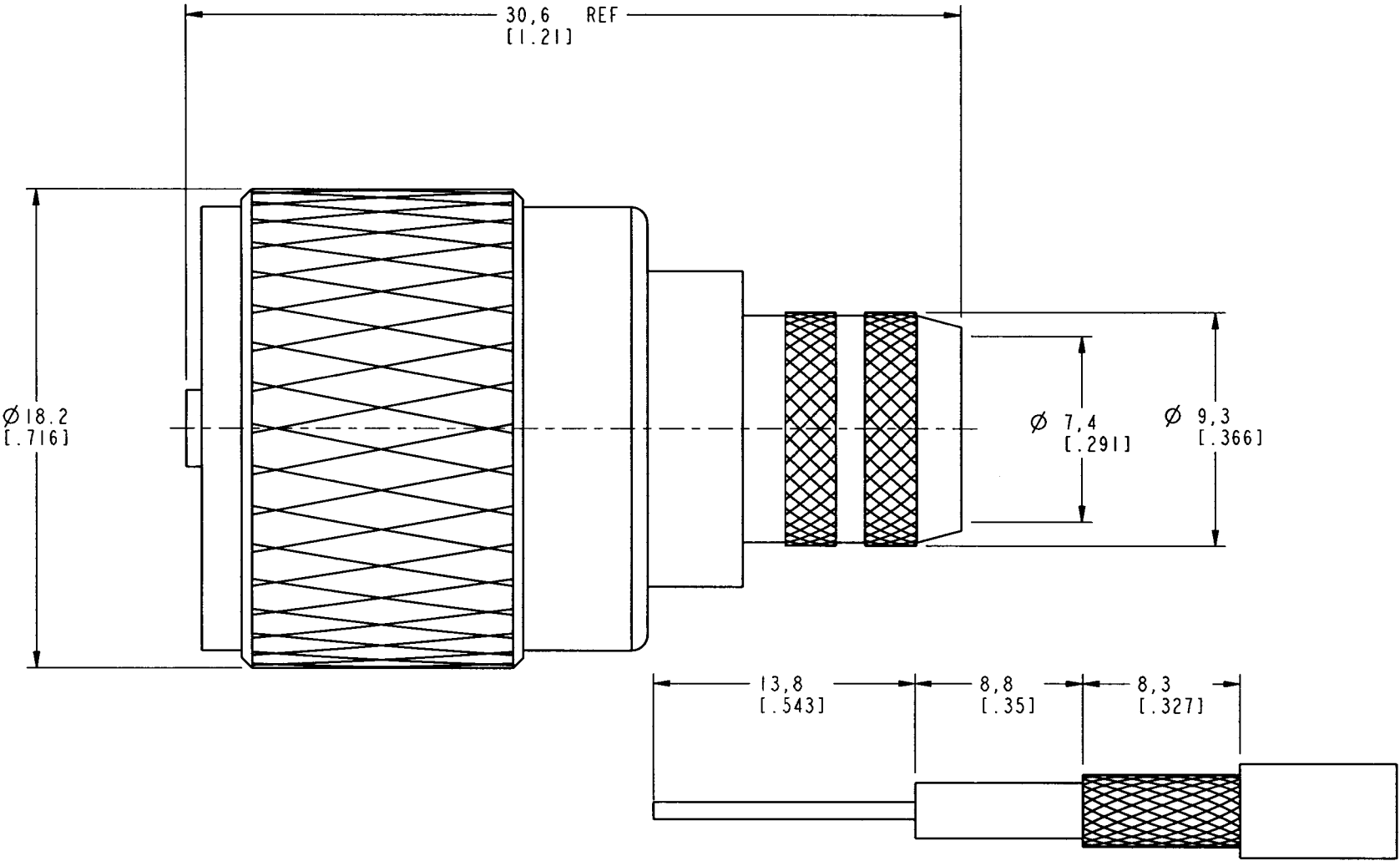
CPM



SCALE 2.000



CUSTOMER OUTLINE DRAWING  
FOR REFERENCE ONLY



RECOMMENDED CABLE  
STRIPPING DIMENSIONS  
SCALE 3.000

UNLESS OTHERWISE SPECIFIED, DIMENSIONS ARE IN INCHES AND TOLERANCES ARE:  
0.5 - 6mm ±0.2mm  
6 - 30mm ±0.4mm  
30 - 120mm ±0.6mm

NOTICE - These drawings, specifications, or other data (1) are, and remain the property of Amphenol Corp. (2) must be returned upon request; and (3) are confidential and not to be disclosed to any person other than those to whom they are given by Amphenol Corp. The furnishing of these drawings, specifications, or other data by Amphenol Corp., or to any other person to anyone for any purpose is not to be regarded by implication or otherwise in any manner licensing, granting rights or permitting such holder or any other person to manufacture, use or sell any product, process or design, patented or otherwise, that may in any way be related to or disclosed by said drawings, specifications, or other data.

MATERIAL

REFERENCE  
EAR 967604-0  
GEN# ASSYM2-UHF

DRAWN  
C. McGRATH

DATE  
8/16/00

ENGINEER  
T. AUBIN

DATE  
8/16/00

APPROVED

DATE

CAD FILE  
I:\UHF\83-8SP-RFX

8/25/00

TITLE

UHF  
CRIMP  
PLUG

Amphenol

Amphenol Corporation  
Communication and Network  
Products Division  
Danbury, CT U.S.A. 06810

SCALE: 4.0:1 SHEET 2 OF 2

CODE ID  
74868

DWG SIZE  
B

DRAWING NO.  
83-8SP-RFX

REV  
A