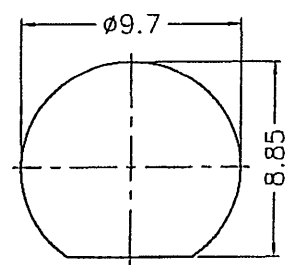
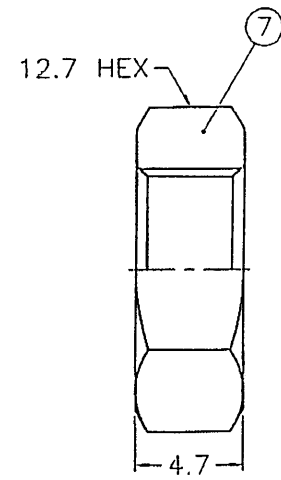
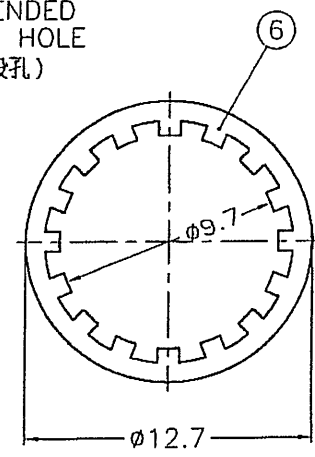
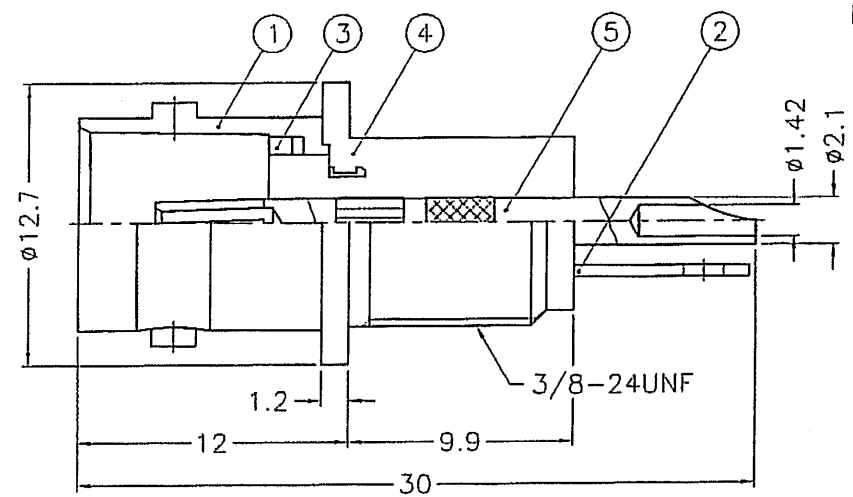


**SALES**

REVISIONS		
ISS	ZONE	DESCRIPTION\PER REQUEST\DATE
B	A-1	NO.1, 2, 3 AND 4 WERE CHANGED\RD-DM88051901C \05-19-99'
B1	A-3	B6651B1-1-75-D WAS B6651B1-1-75-C\H/A\ 03-01-05'



RECOMMENDED MOUNTING HOLE  
(建議架設孔)



- NOTES: FINISH (PLATING THICKNESS IN MICRO-INCHES)
- BRASS PER QQ-B-626
  - BRASS PER QQ-B-613
  - NICKEL PL. 100 MIN. THICK OVER COPPER STRIKE
  - PHOSPHOR BRONZE PER QQ-B-750
  - GOLD PL. 3 MIN. THICK OVER NICKEL PL. 100 MIN. THICK OVER COPPER STRIKE
  - BRIGHT TIN PL. 200 MIN. THICK OVER NICKEL PL. 50 MIN. THICK OVER COPPER PL. 100 MIN. THICK

RECOMMENDED TORQUE: A MAXIMUM TORQUE OF 12 INCH-LBS MAY BE APPLIED ON HEX NUT WHEN MOUNTING CONNECTOR IN PANEL.  
(建議扭力: 當架設接頭于基板時, 六角螺母最大適用 12 inch-lbs 的扭力.)

ISSUED  
2005. 3. 03  
R & D

NO.	DESCRIPTION	MATERIAL	FINISH	Q'TY	DRAWING NO.
7	HEX NUT			1	HN127-3/8-24X47
6	LOCK WASHER			1	LW-127/97X05
5	CONTACT PIN			1	B7300-5
4	INSULATOR	NYLON	WHITE	1	B6651B1-1-75--
3	LOCK RING			1	D
2	BRAID GROUNDING			1	
1	BODY			1	

DIMENSIONS ARE IN MILLIMETERS				PART NO.	
UNLESS OTHERWISE SPECIFIED TOLERANCES 0.5-6 = ±0.2 6-30 = ±0.4 30-120 = ±0.6 120-315 = ±1 315-1000 = ±1.6 1000-2000 = ±2.4				APPROVED	DATE
				CHECKED	DATE
				DRAWN	DATE
				FILE NO.	F:\DWG\B\6651B1\75\NNYL3G-B1SZ

<b>Amphenol</b>	
Danbury, CT, USA - Tainan, Taiwan - Shenzhen, China	
TITLE	BNC BULKHEAD RECEPT. ISOLATED JACK
DRAWING NO.	B6651B1-NNYL3G-75
ITEM NO.	016651AAA01MG7F

RD-DR 24510 8