

11

11

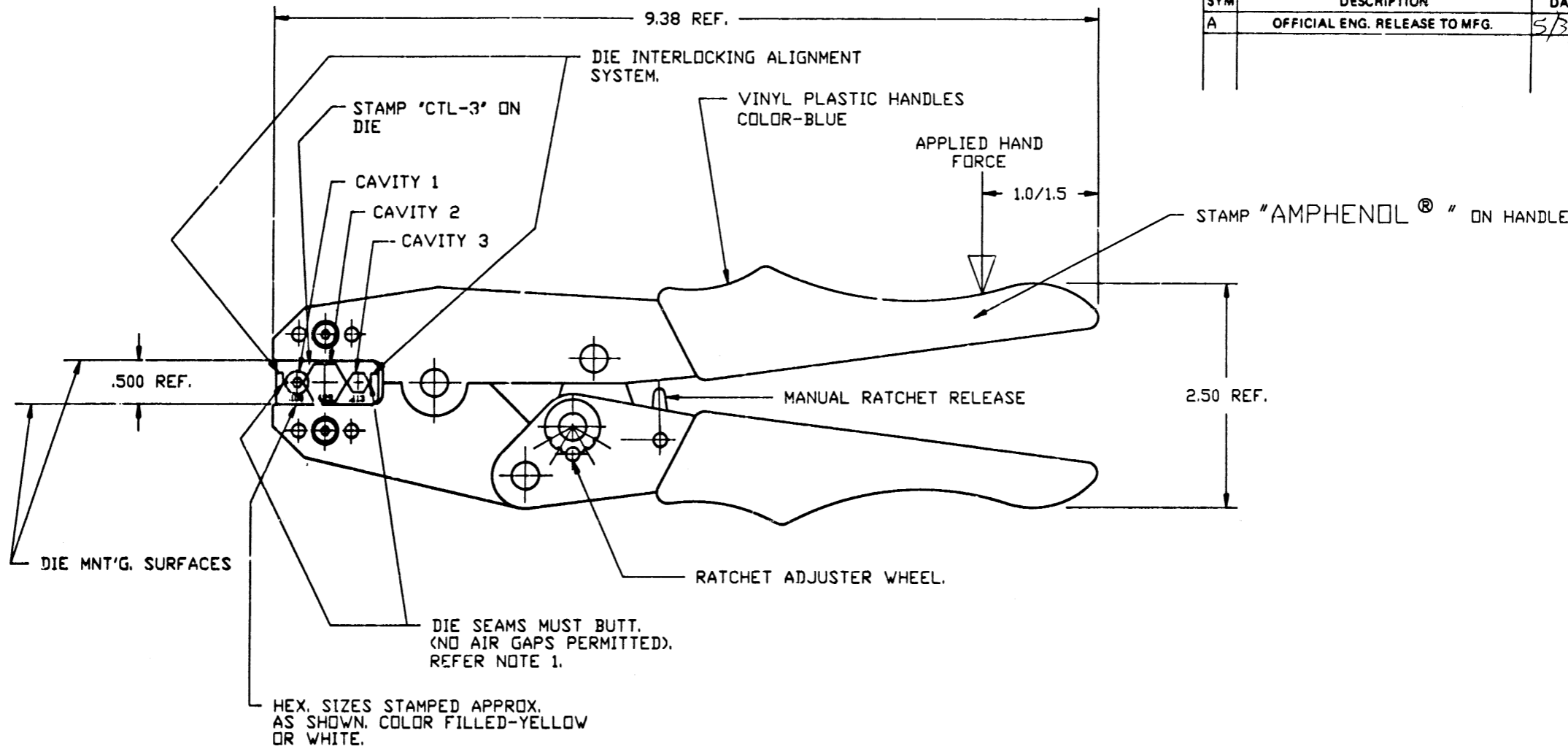
58

8.5

11"

17"

DO NOT SCALE THIS DRAWING



REVISIONS				
SYM	DESCRIPTION	DATE	E.C.O. NO.	APPR.
A	OFFICIAL ENG. RELEASE TO MFG.	5/3/91	38063	DR

CTL-3	
DRAWING NUMBER	ISSUE
	A

NOTES:

1. INITIAL TOOL SETTING REQUIRMENTS:

WITH DIES FIRMLY AFFIXED IN TOOL ON THE DIE MNT'G. SURFACES, CLOSE THE TOOL FULLY (UNTIL THE RATCHET RELEASES) WITH 25-35 LBS. HAND FORCE. THE DIES MUST BE 'BUTTED' (TOUCHING BOTH FRONT & REAR SURFACES). THE RATCHET ADJUSTER WHEEL SHOULD BE POSITIONED IN THE CENTER INDENT (+/- ONE INDENT POSITION).

2. NOTE: LABEL 999-308 MUST BE AFFIXED TO TOOL CONTAINER BOX.

CAVITY NO.	DIM. ACROSS HEX FLATS	GROOVE ACCOMMODATIONS
1	.100 +/- .003	CENTER CONTACT
2	.429 +/- .003	RG8, 213, 214 ETHERNET
3	.213 +/- .003	RG58

RFX PROGRAM

REF. CAD FILE: H:\DEPT611\TOOLS\CTL-3

REMOVE ALL BURRS, BREAK CORNERS AND SHARP EDGES TO MAXIMUM UNLESS OTHERWISE SPECIFIED

NOTICE - These drawings, specifications or other data (1) are and remain the property of Amphenol Corp. (2) must be returned upon request and (3) are confidential and are not to be disclosed to any person other than those to whom they are given by Amphenol Corp. The furnishing of these drawings, specifications or other data by Amphenol Corp. or by any other person to anyone for any purpose is not to be regarded by implication or otherwise as in any manner licensing, granting rights or permitting such holder or any other person to manufacture, use or sell any product, process or design, patented or otherwise, that may in any way be related to or disclosed by said drawings, specifications or other data.

NEXT ASSY	USED ON	UNLESS OTHERWISE SPECIFIED DIMENSIONS ARE IN INCHES. TOLERANCES NOT OTHERWISE SPECIFIED ARE: 3 PLACE DECIMAL 1.015 (0.381 mm)	3 PLACE DECIMAL 1.008 (0.127 mm)	ANGLES : 10
MATERIAL AS PURCHASED		REFERENCE DRAWING NO EAR 962370-0		
SPECIFICATION				
FINISH AS PURCHASED				

DRAWN BY TERRI ALBERA	DATE 4-30-91
CHECKED D. ROYCE	DATE 5-1-91
ENGINEER D. ROYCE	DATE 5-1-91
QUALITY ASSURANCE <i>W. J. K. S.</i>	DATE 5-1-91
MFG. ENG. <i>H. F. P. L. and</i>	DATE 5/3/91

QUICK CRIMP TOOL FOR N CRIMP PLUGS- 3 PC. TYPES

Amphenol Corporation
RF/Microwave Operations Danbury, Conn. U.S.A.
SCALE 1=1 SHEET OF
CODE IDENTIFICATION DRAWING SIZE DRAWING NO
74868 C CTL-3
ISSUE A

PART NO.	QUAN	UOM	DESCRIPTION	CODE	FINISH
LIST OF MATERIAL					

Mouser Electronics

Authorized Distributor

Click to View Pricing, Inventory, Delivery & Lifecycle Information:

[Amphenol:](#)

[CTL-3](#)